

Comparison of Different Panel

Performance		Steel cement panel	Steel bullseye panel	Woodcore panel	Calcium Sulphate panel	Die-casting aluminum panel	Aluminum honeycomb anti-static panel
Ultimate load		A	B	C	D	E	D
Safety factor		A	B	C	D	E	D
Overload protection		A	B	C	D	E	D
Fire rating		A	B	E	A	E	A
Panel size		B	B	B	B	A	B
Panel weight(bare finish)		C	A	A	E	A	A
Bare panel sound insulation		C	C	B	A	E	A
Walking feeling		A	B	A	A	B	A
Recycled content		B	B	D	A	E	A
*Support for Green building certificate		B	B	D	A	E	A
Cost efficiency		A	D	D	B	E	B
Cutting ease and cost		B	A	A	E	C	D
Application	Office	A	B	A	A	E	A
	Data center	A	B	D	B	B	B
	Education	A	D	A	B	E	B
	Casino	A	E	D	A	B	A
	Industrial cleanroom	B	E	E	E	A	E
	Library	A	C	B	A	E	A

Note:
(1)ZTFLOOR has continuous product and product data improvement. It reserves the right to change type design and specifications without notice.
(2) 'A' ---Most advantage, 'E' ---Least advantage.
(3)The comparison is based on the panels of the same concentrated loading grade.

ZTFLOOR®
中天机房

CHANGZHOU WUJIN ZHONGTIAN COMPUTER-ROOM EQUIPMENT CO.,LTD

Address : Weixing Industrial Zone,Henglin Town,213103 Changzhou City, Jiangsu Province, P.R of China

- ZTFLOOR passes third-part Green Material certificate.,Please ask for details through company sales.
 - For more new products,please contact ZTFLOOR sales.
- (2019)

<http://www.ztfloor.com>

朝晖® **ZTFLOOR®**



ACCESS FLOOR SYSTEM



ZTFLOOR®
中天机房

CHANGZHOU WUJIN ZHONGTIAN
COMPUTER-ROOM EQUIPMENT CO.,LTD



As one of the largest access floor manufacturers and exporters in China, every year, ZTFLOOR supplies over 2 million square meters of access floor in commercial office buildings, data centers, educational facilities, the casinos, clean rooms and libraries.

The company is expanding with plant area over 60,000 square meters and 200 staffs. The main products include access floor system, data center products, underfloor air conditioning and underfloor wiring.

ZTFLOOR leverages its 25+ of experience in the industry to provide support to customers by its high efficiency, energy conversation, intelligence and green spaces products.



CERTIFICATES



The company carries out Chinese standard of SJ/T10796-2001 for all products. Other specifications and tests of different standards such as KS, JIS, CISCA, MOB and EN12825 are also available.

STEEL
CEMENTITIOUS
PANEL

ZT50 OA PANEL



Structure

ZT50 OA panel is made of steel plate, top to be SPCC material, bottom to be ST14 material, after pan formed and joined together by resistance welding, the panel is coated with epoxy paint, then infilled with light cement.

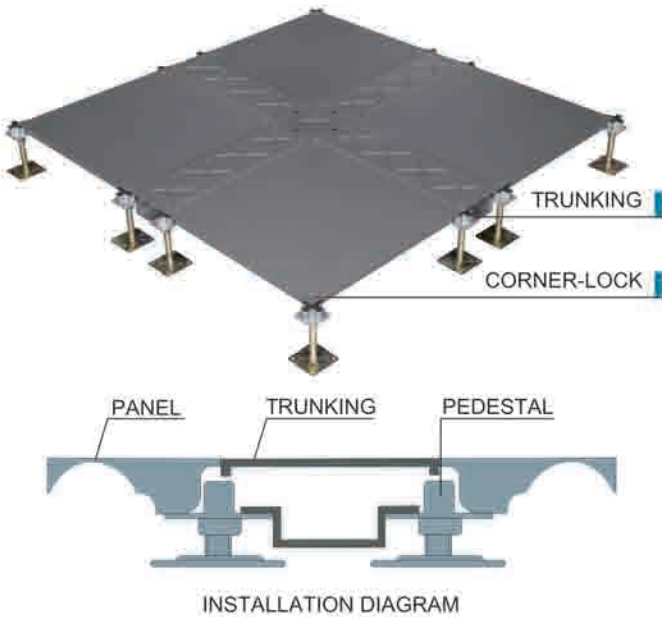
Product property

- Panel weight : 8-12kgs/pc
- ASTM E136-11 and BS476-4: Non combustible
- ASTM E84-14: Class A
- EN13501: Class A1
- ASTM E492-09: IIC58
- ASTM E283-04 25Pa: $\leq 0.3L/s \cdot m^2$
- NIOSH9002: Asbestos-free
- LEED assessment report available



STEEL
CEMENTITIOUS
PANEL

ZT50 OA PANEL



Wire Trunking System

A workstation can be easily and quickly relocated with cable management without disruption. Convenient for connecting wire at any point without cutting floor. Suitable for all kinds of plug socket terminals. Adjustable wire-connected location.



ZT50 (front)

ZT50 (back)

ZT50-C2 (front)

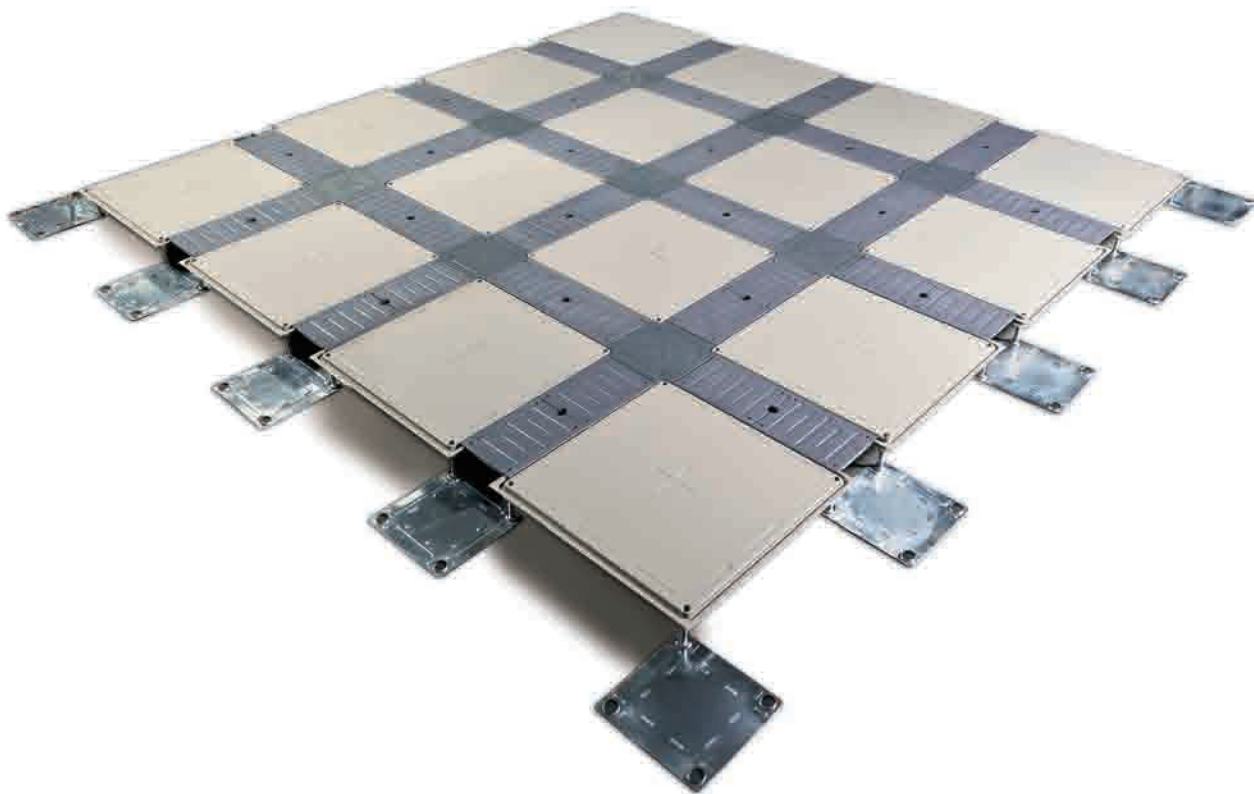
ZT50-C2 (back)

Specifications

Type	Size	Compressive	Impact Load	Ultimate Load	Uniform Load	Bending Load		Standard
International	mm	N	N	N	N/M ²	10times	10000times	SJ/T 10796-2001
SC668	500 × 500 × 28	≥3000	670	≥9000	≥12500	2200	1500	
SC800	500 × 500 × 28	≥3600	670	≥10800	≥19800	3000	2200	
SC1000	500 × 500 × 28	≥4500	670	≥13500	≥23300	3600	3000	

STEEL
CEMENTITIOUS
PANEL

ZT50-B PANEL



Structure

ZT50-B panel is elevated innovation and breakthrough, comparing with traditional access floor system. The new ZT50-B series has the same advantage of ZT50 panel, but more convenient, environmental protected.



STEEL
CEMENTITIOUS
PANEL

ZT50-B PANEL



Product Description

ZT50-B panel is supported by 4 pedestals and flank cap and central cap.

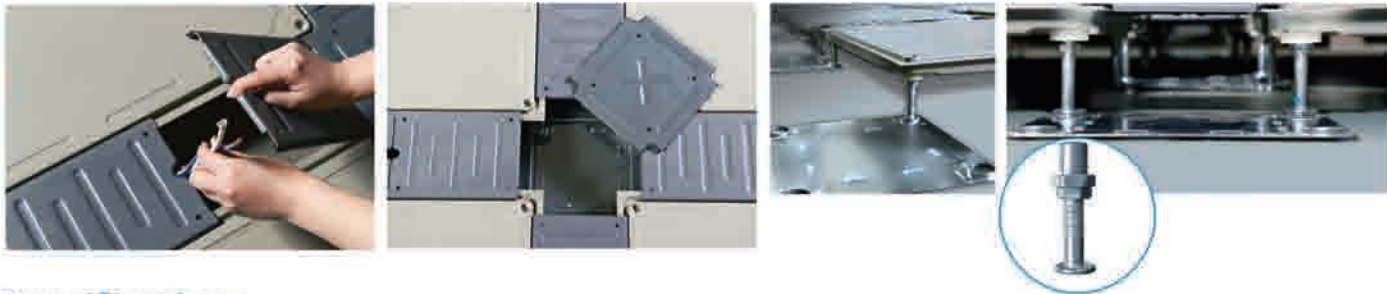
Feature

- Environmental protected, economical and recyclable.
- Light weight, 1/2 to 2/3 of common access floor.
- Good conductivity and air leakage, flexible trunks for wires and cables.
- Specially designed for low finished flooring height.



Trunking

Trunking for wires is one of the advantages of ZT trunking floor. Cover flank covers on basic panel edges after lying wires in trunks. Each panel stands separately, making it very convenient to lie flank cover before or after wires.

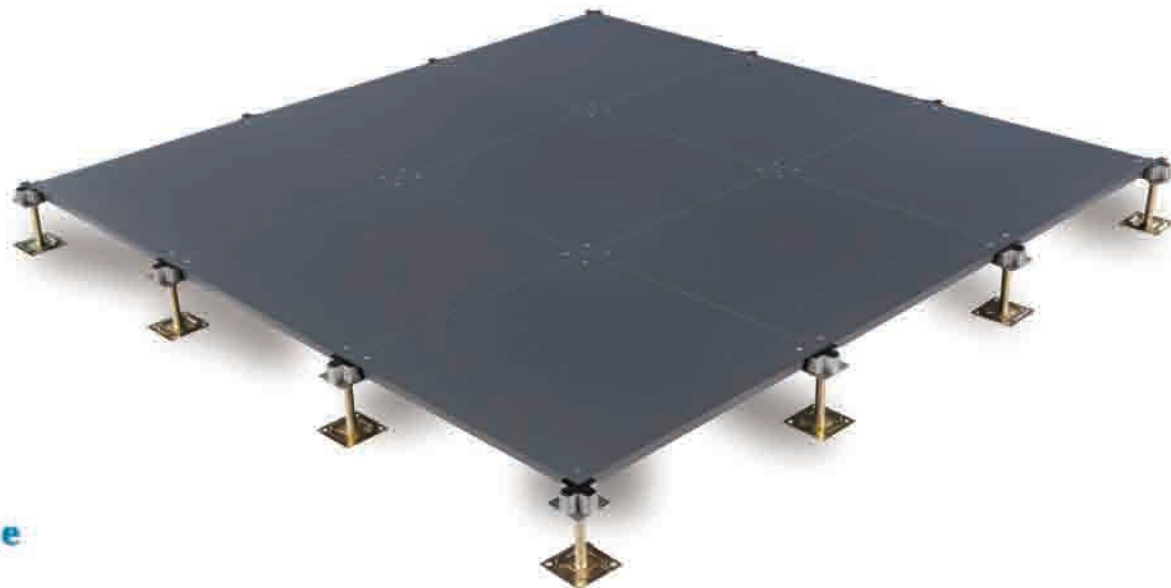


Specifications

Type	Size	Concentration	Impact Load	Ultimate Load	Uniform Load	Rolling Load	Standard
International	mm	N	N	N	N/M ²	10times 10000times	
SC668	500 × 500 × 25	≥3000	670	≥9000	≥12500	2200 1500	SJ/T 10796-2001
SC800	500 × 500 × 25	≥3600	670	≥10800	≥19800	3000 2200	
SC1000	500 × 500 × 25	≥4500	670	≥13500	≥23300	3600 3000	

STEEL
CEMENTITIOUS
PANEL

ZT60 OA PANEL



Structure

ZT60 OA panel is made of steel plate, top to be SPCC material, bottom to be ST14 material, after pan formed and joined together by resistance welding, the panel is coated with epoxy paint, then infilled with light cement.

Product property

Panel weight : 12 ~22kgs/pc
ASTM E136-11 and BS476-4: Non combustible
ASTM E84-14: Class A
EN13501: Class A1
ASTM E492-09: IIC58
ASTM E283-04 25Pa: ≤0.3L/s · m2
NIOSH9002: Asbestos-free
LEED assessment report available



STEEL
CEMENTITIOUS
PANEL

ZT60 OA PANEL



Structure

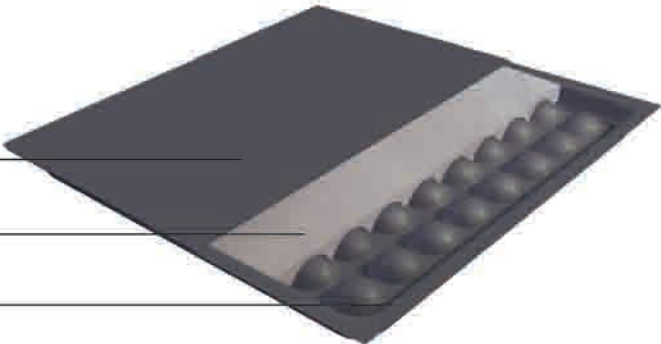
- Screw down design supports the system effectively and makes the installation easily and stable.
- The load is transferred directly onto the center of pedestal column.
- Different types of understructures are available for install OA panel system.



SPCC steel

LIGHT CEMENT

ST14 STEEL

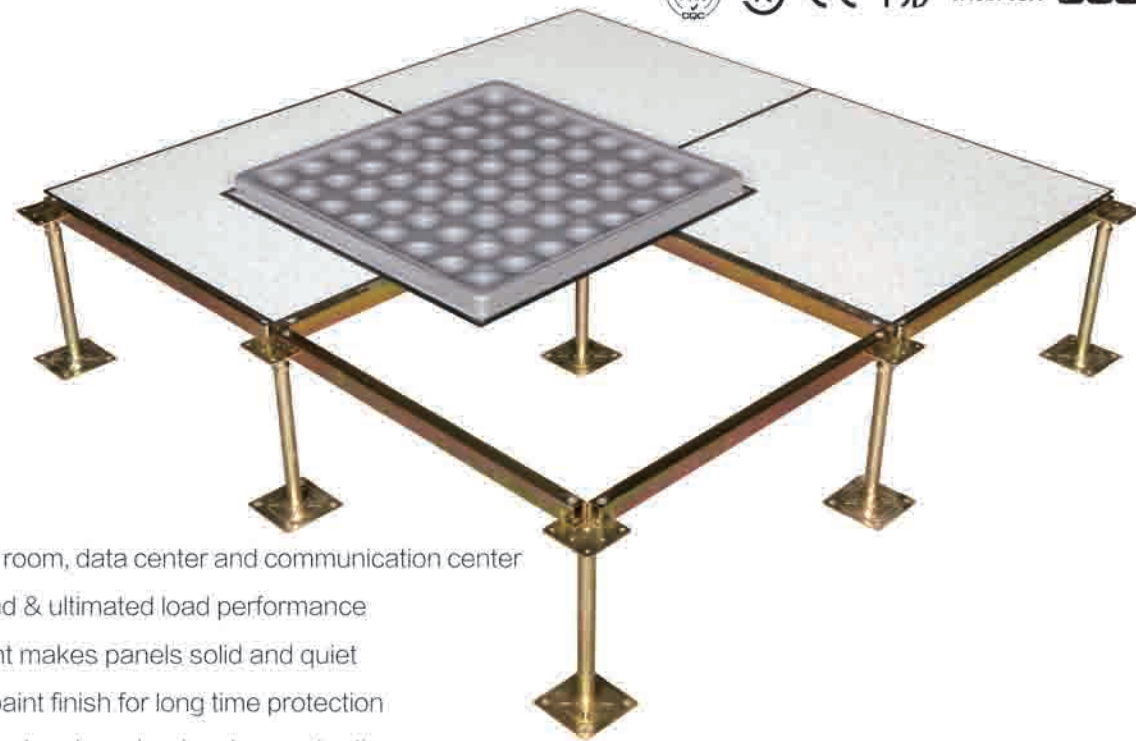


Specifications

Type	Size	Concentrated	Impact Load	Ultimate Load	Uniform Load	Rolling Load	Standard
International	mm	N	N	N	NM ²	10times	10000times
SC668	600 × 600 × 35	≥3000	670	≥9000	≥12500	2200	1500
SC800	600 × 600 × 35 610 × 610 × 35	≥3600	670	≥10800	≥19800	3000	2200
SC1000	600 × 600 × 35 610 × 610 × 35	≥4500	670	≥13500	≥23300	3600	3000
SC1250	600 × 600 × 35 610 × 610 × 35	≥5600	670	≥16800	≥33100	4500	3600
SC1500	600 × 600 × 35 610 × 610 × 35	≥6700	670	≥20100	≥42600	5600	4500
SC2000	600 × 600 × 35 610 × 610 × 35	≥8900	780	≥26700	≥49800	6700	5600
SC2500	600 × 600 × 35 610 × 610 × 35	≥11100	780	≥33300	≥58300	8900	6700
SC3000	600 × 600 × 35 610 × 610 × 35	≥13300	880	≥39900	≥66900	11100	8900

STEEL CEMENTITIOUS PANEL

LAMINATE PANEL



Feature

- Used for computer room, data center and communication center
- Excellent rolling load & ultimated load performance
- Light weight cement makes panels solid and quiet
- Black/grey epoxy paint finish for long time protection
- Class A flame spread and smoke development rating
- Convenient installation supplies an excellent solution for office integrity, wiring and date cable service

Wide range finishes available

- High Pressure Laminate
- Conductive vinyl tile
- Ceramic
- Carpet tile
- Linoleum
- Granite/Marble

LAMINATED TILE

SPCC STEEL

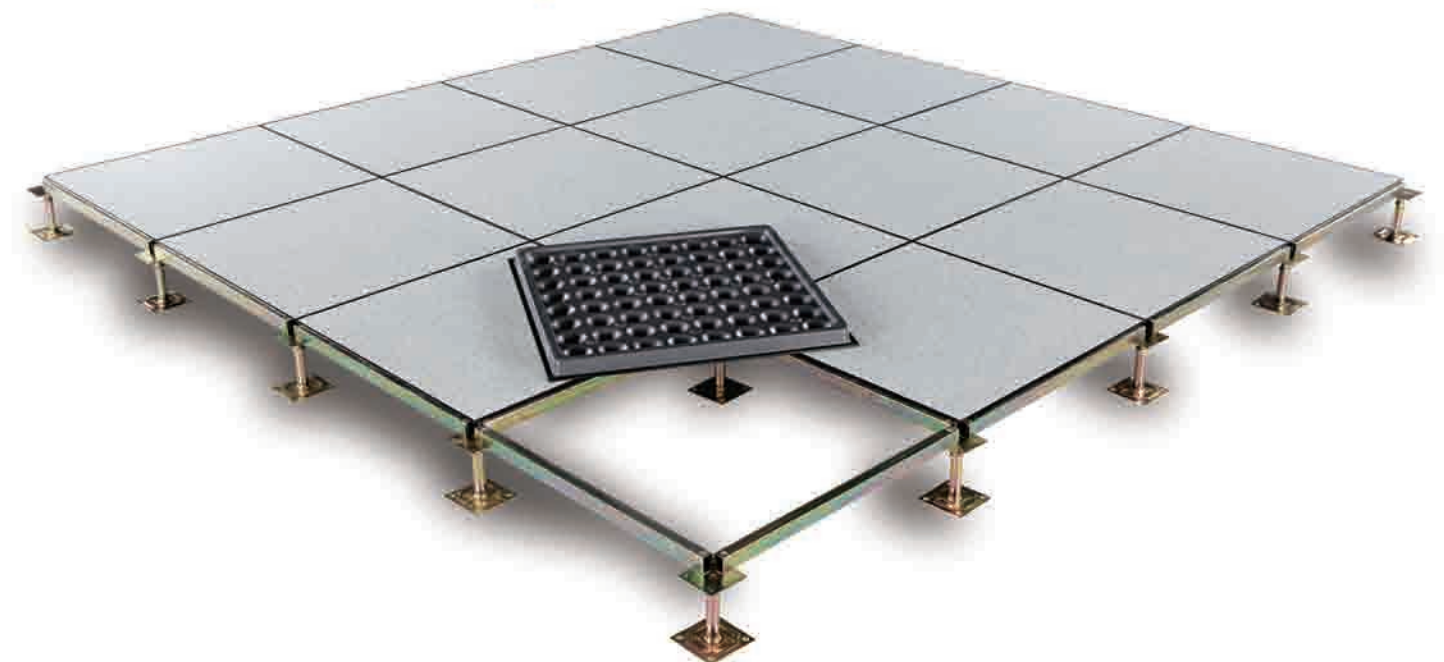
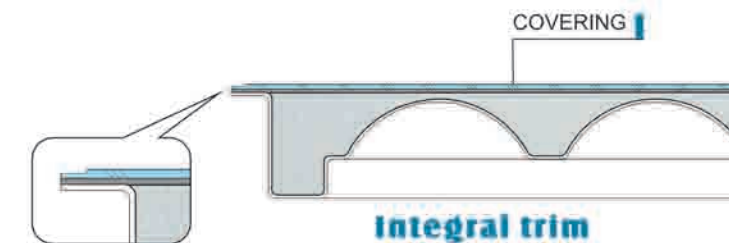
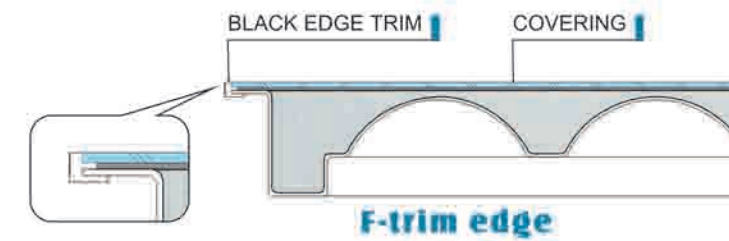
LIGHT CEMENT

ST-14 STEEL



STEEL CEMENTITIOUS PANEL

LAMINATE PANEL



CALCIUM SULPHATE
ACCESS FLOOR

ENCAPSULATED PANEL



Structure

Encapsulated with high density fiber calcium sulphate core.

Product property

Panel weight : 10 -22kgs/pc
Panel thickness: 25-40mm
EN12825dimension tolerance: 1
EN13501: Class A1
EN1366-6 fire rating: 2hours
ASTM E492-09: IIC55
ASTM E283-04 25Pa: ≤0.3L/s · m2
NIOSH9002: Asbestos-free
QBIT 2591-2003:Antibacterial
LEED assessment report available



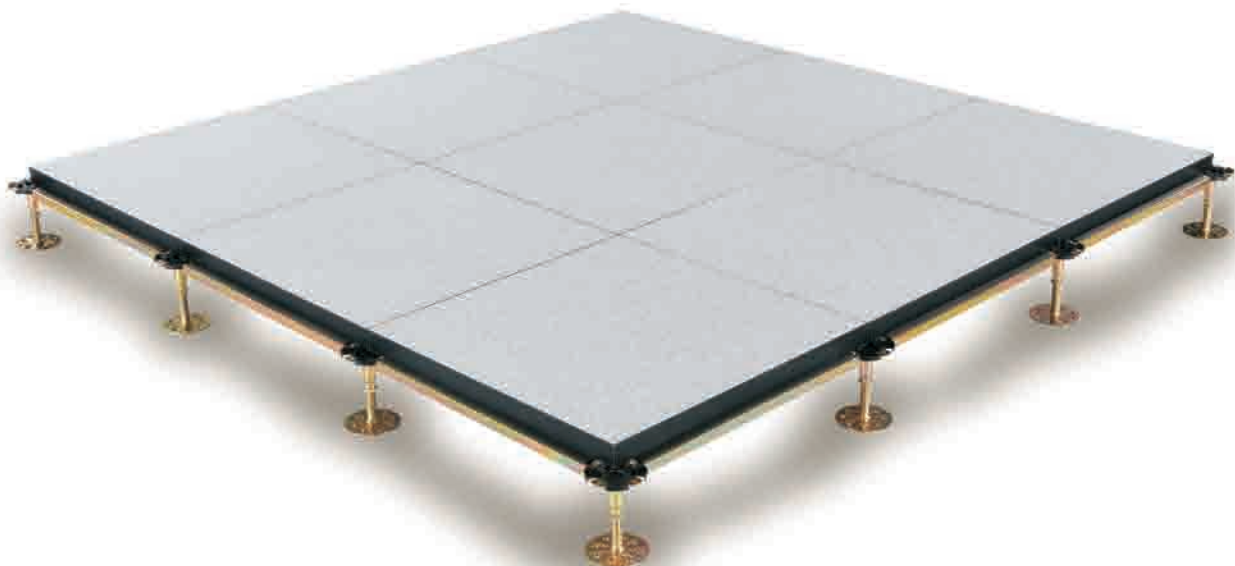
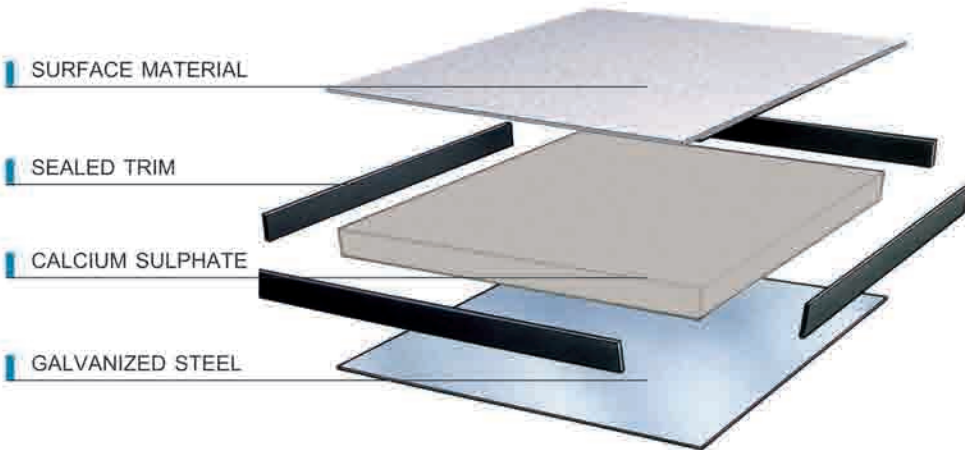
CALCIUM SULPHATE
ACCESS FLOOR

ABS SEALED PANEL



Structure

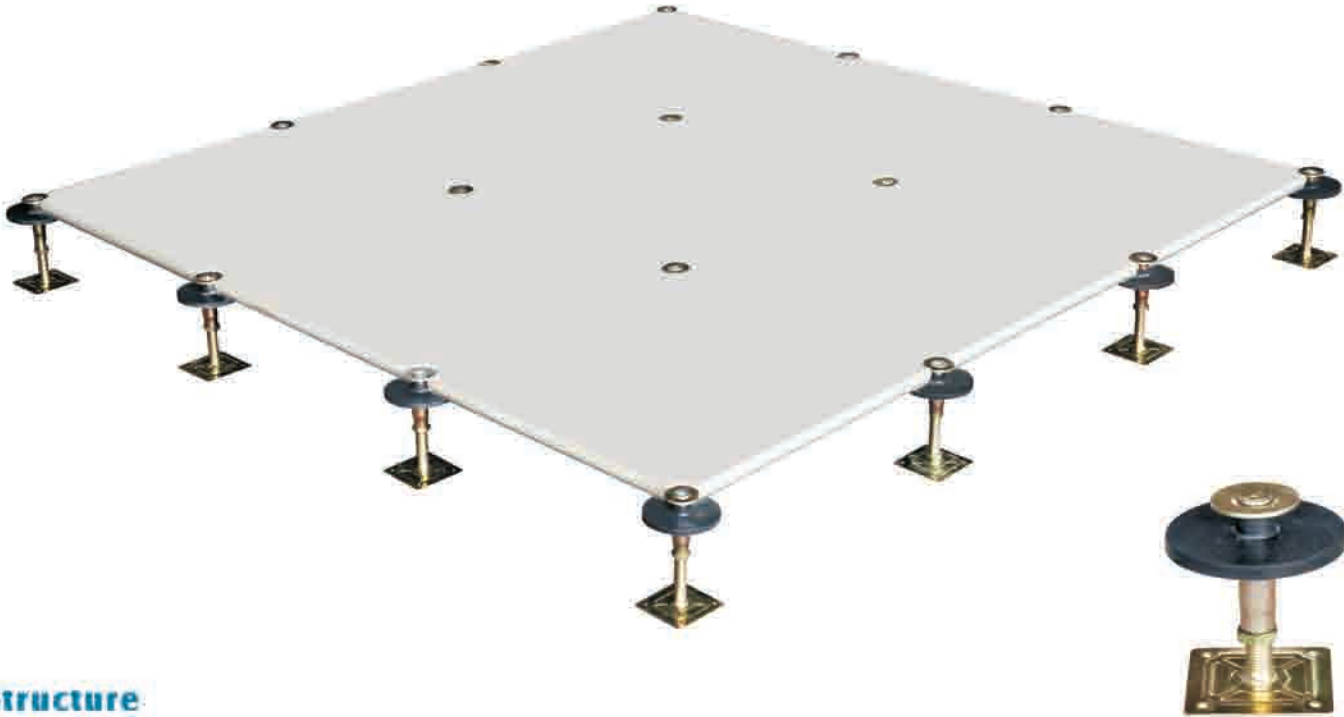
With high density calcium sulphate core, panel surface can be laminated with HPL, conductive PVC, bottom with quality galvanized steel / aluminum foil, four sides with conductive ABS edging.



Specifications

Type	Size	Concentrated	Impact Load	Ultimate Load	Uniform Load	Rolling Load	Standard
International	mm	N	N	N	N/M²	10times 10000times	SJ/T 10796-2001
C1000	500 × 500/600 × 600/610 × 610	≥4500	670	≥13500	≥23300	3600 3000	
C1250	500 × 500/600 × 600/610 × 610	≥5600	670	≥16800	≥33100	4500 3600	

GRC FLOOR



Structure

GRC floor uses high quality cement and gypsum powder as main raw materials, combined with reinforcing fiber, not only keep the raw material itself superior fire resistance, more raised the bearing of products. Because the floor did not use a metal material on the surface, the foot feeling is closer to the floor entity and creates a down to earth feel. GRC floor small size, light weight, not only can be more convenient in the construction, but also reduces the load of the raised floor system to the floor, making the service life of the floor more durable.

GRC floor plate is more light, combined with adjustable height, improves the space utilization of underfloor wiring. Easy installation, high demension accuacy and excellent interchangeability. Recyclable, save resources and protect the environment.



Specifications

Type	Size	Concentrated	Impact Load	Ultimate Load	Uniform Load	Rolling Load	Standard
International	mm	N	N	N	N/M²	10times 10000times	SJ/T 10796-2001
GC668	500×500×26	≥3000	670	≥9000	≥12500	2200 1500	
GC800	500×500×26	≥3600	670	≥10800	≥19800	3000 2200	
GC1000	500×500×26	≥4500	670	≥13500	≥23300	3600 3000	

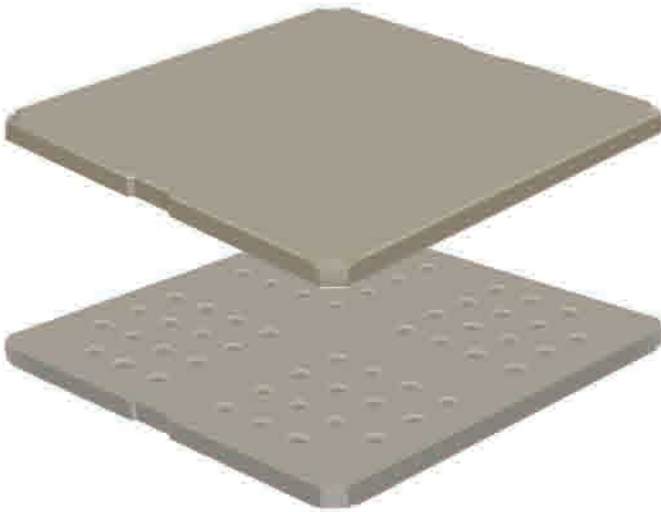
FRC FLOOR



Structure

FRC access floor is made of silicate, inorganic fiber, mineral fiber, quartz sand, etc, once molded after high pressure. The panel has no volatile toxic chemicals and radiation, and can be decomposed completely. Its service time is the same as the building.

Each panel has hole for wires, four corners supported by pedestals, with no stringers. Good flatness and solid feeling. Finishes can be laminate flooring, PVC, carpet, etc.



Specifications

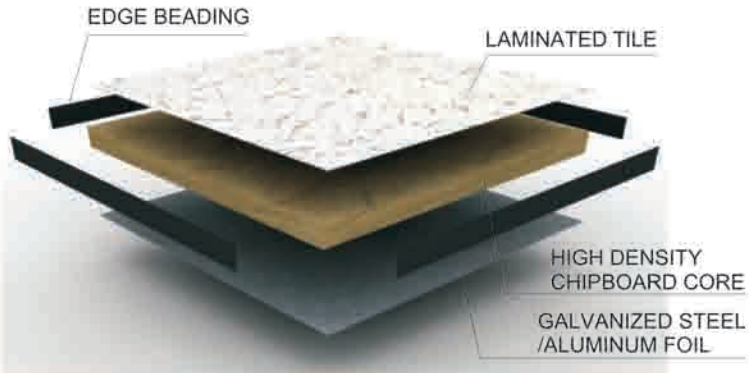
Type	Size	Concentrated	Impact Load	Ultimate Load	Uniform Load	Rolling Load	Standard
International	mm	N	N	N	N/M²	10times 10000times	SJ/T 10796-2001
FC668	500×500×25	≥3000	670	≥9000	≥12500	2200 1500	

WOODCORE ACCESS FLOOR ABS SEALED PANEL



Structure

Woodcore access floor consists of high-density(720Kg/m3) chipboard. Galvanized steel sheet/aluminum foil is bonded to the bottom of the chipboard. HPL or PVC is stuck to the top of the chipboard, four edges are sealed with ABS edging strip.



Product property

Panel weight : 5 -15kgs/pc
Panel thickness: 20-40mm
EN12825dimension tolerance: 2
EN1366-6 fire rating: 15minutes
EN ISO140-12 sound insulation: 50



Specifications

Type	Size	Concentrated	Impact Load	Ultimate Load	Uniform Load	Repeating Load	Standard
International	mm	N	N	N	N/M²	10times 10000times	
W400	500×500/600×600/610×610	≥1800	410	≥5400	≥9800	1200 700	SJ/T 10796-2001
W668	500×500/600×600/610×610	≥3000	670	≥9000	≥12500	2200 1500	
W800	500×500/600×600/610×610	≥3600	670	≥10800	≥19800	3000 2200	
W1000	500×500/600×600/610×610	≥4500	670	≥13500	≥23300	3600 3000	

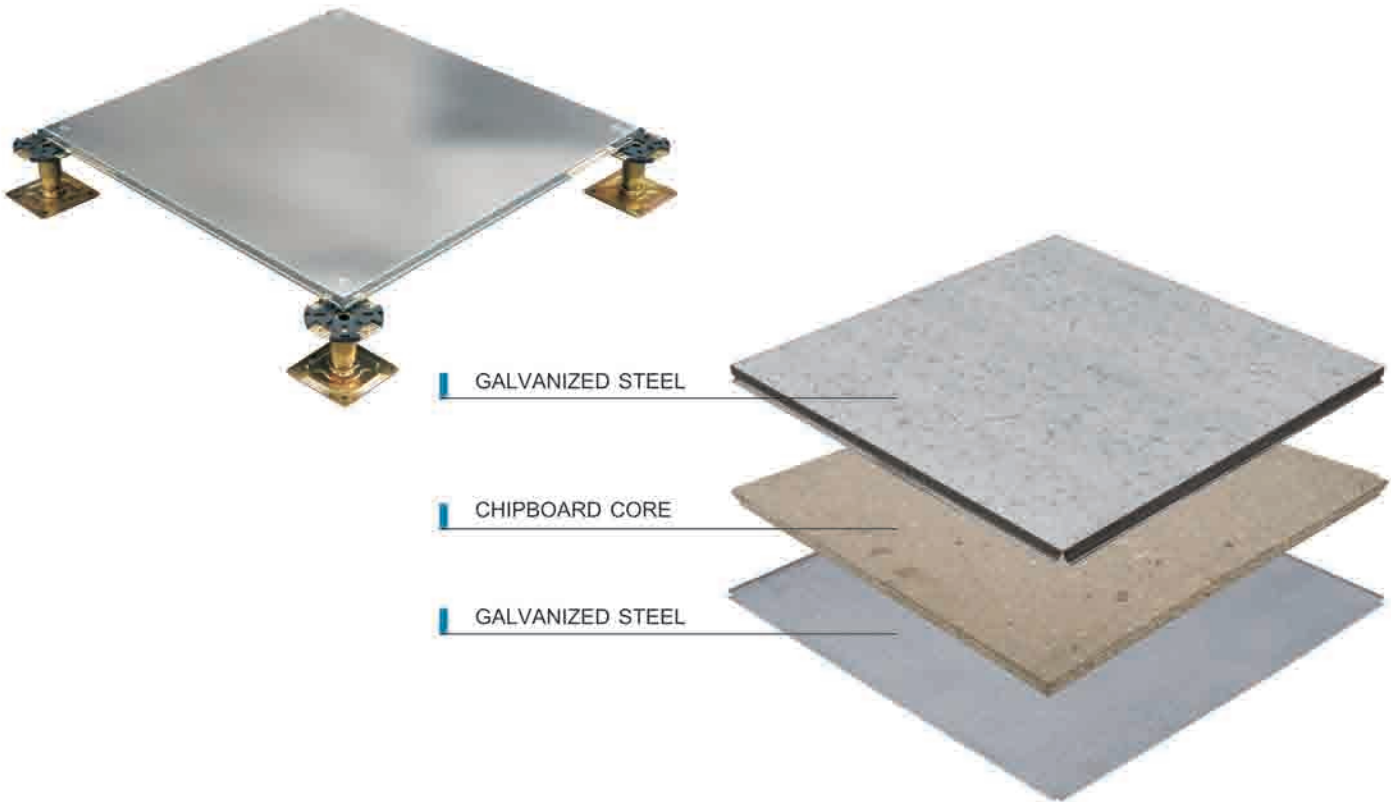
WOODCORE ACCESS FLOOR

ENCAPSULATED PANEL



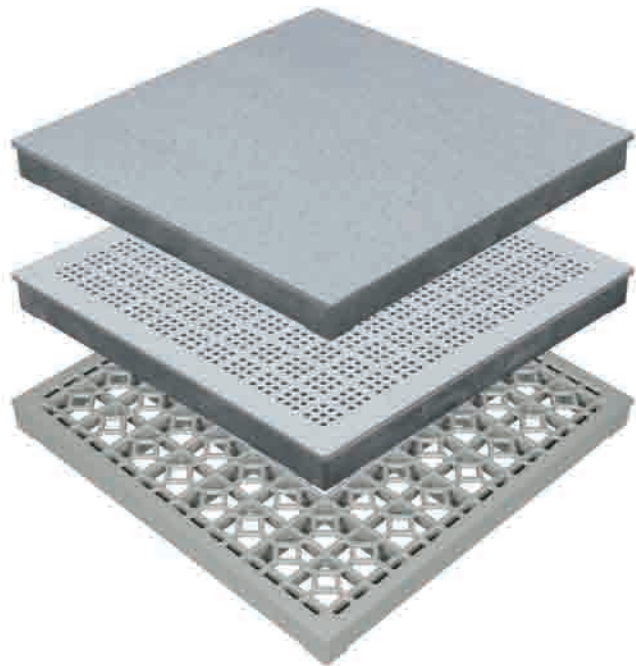
Structure

Floor panel is encapsulated to provide full steel encasement, steel to be high quality galvanized steel sheet as top and bottom. High density chipboard as the core.



ALUMINUM ACCESS FLOOR

ISO 9001 K CE PSB Intertek SGS



Feature

Aluminum access floor is die-casting with aluminum ingot which is light and anticorrosion.
Aluminum access floor is widely used in the Data Center and Industrial Clean Room.

Specifications

Type		Size	Concentrated	Impact Load	Ultimate Load	Uniform Load	Rolling Load		Standard
International	Material	mm	N	N	N	N/M ²	10times	10000times	SJ/T 10796-2001
A1250	ADC12	600×600	≥5600	670	≥11200	≥33100	4500	3600	
A1500	ADC12	600×600	≥6700	670	≥13400	≥42600	5600	4500	
A3000	ADC12	600×600 610×610	≥13300	880	≥26600	≥66900	11100	8900	

ALUMINUM HONEYCOMB ANTI-STATIC PANEL

ISO 9001 K CE PSB Intertek SGS



Size

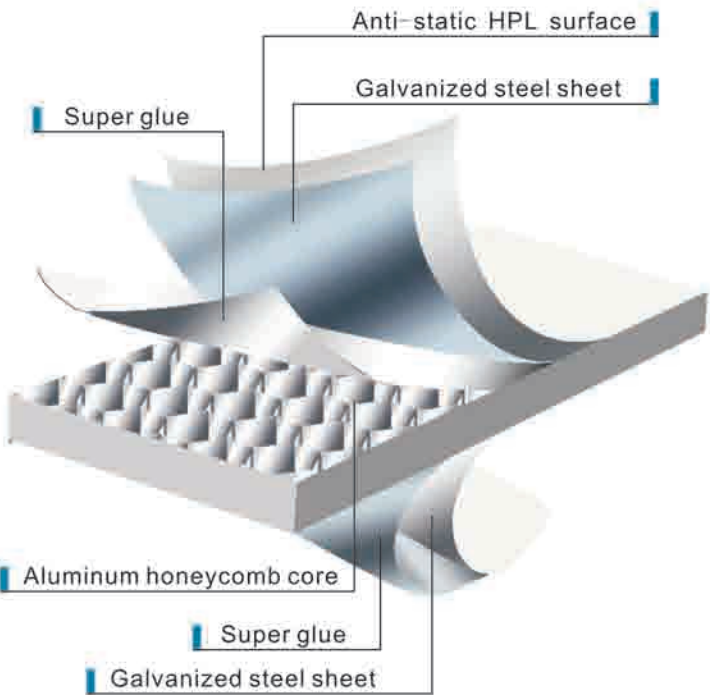
600×600×30MM

Structure

Aluminum honeycomb anti-static floor is a composite raised movable floor with full metal. Aluminum honeycomb structure is inside. Customers can choose HPL cover according to their need. The edges are fixed with black conductive edge strip.

Feature

- Light product, flame retardant, sound insulation, heat insulation, moistureproof, anti-corrosive, fire prevention, durable and easy to transport
- Green, environmental protection, recyclable, can be used for second time



FLOORING ACCESSORIES

ISO 9001
KGS CE PSB Intertek SGS

“ZTFLOOR” presents an extensive choices of accessories, including electrical boxes, grommets, panel lifters and air diffuser and so on.



AIR DIFFUSER



ROUND BRUSH GROMMET



SURFACE BRUSH GROMMET



SPLIT INTEGRAL GROMMET



Diameter 15cm

ROUND GROMMET



Diameter 19.5cm



SQUARE GROMMET



INTEGRAL GROMMET



SINGLE/DOUBLE CUP LIFTER



OUTLET BOX B



OUTLET BOX C

ISO 9001
KGS CE PSB Intertek SGS

UNDER STRUCTURE



STRINGERS



C01 C02 C03 C04

CROSS HEAD PEDESTAL



F06 F01 F02 F05

FLAT HEAD PEDESTAL

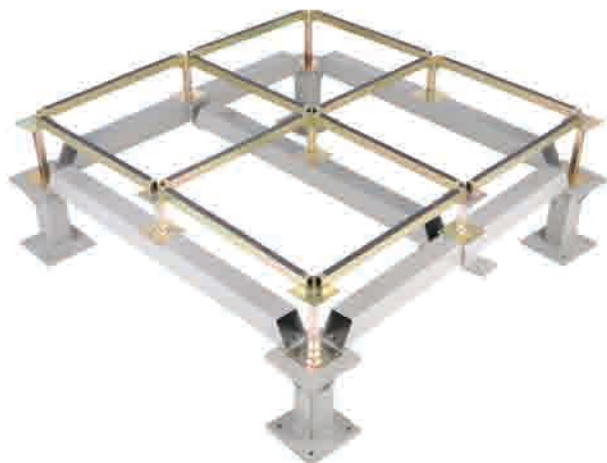


W03 W05 W07 W09

ROUND HEAD PEDESTAL



HEAVY DUTY PEDESTAL



SEISMIC PEDESTAL



RAMP PEDESTAL



PEDESTAL BRACING



BRACING CLAMP

AIR FLOW SYSTEM



Feature

Steel perforated panel is specially designed to allow air flow through the access floor up to the equipment.

17%RATE AIR FLOW PANEL

22%RATE AIR FLOW PANEL

28%RATE AIR FLOW PANEL

30%RATE AIR FLOW PANEL

36%RATE AIR FLOW PANEL

45%RATE AIR FLOW PANEL

80%RATE AIR FLOW IRON PANEL

15%RATE AIR FLOW CERAMIC PANEL



AIR FLOW SYSTEM



DC55

DC56

DC68

ALUMINUM AIR GRILLE WITH DAMPER

GLASS PANEL



SLIDING DAMPER



ROUND DAMPER



OPPOSED BLADE DAMPER

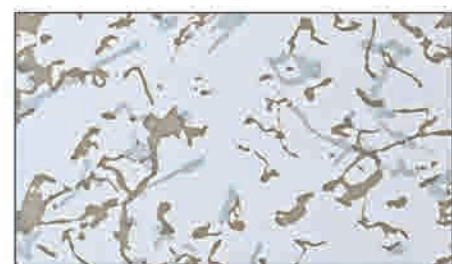
COVERING MATERIAL



High Pressure Laminate(HPL)

A Comprehensive selection of ZTFLOOR covering materials are available including more colors of HPL, Vinyl and other interior finishes, to satisfy customer's different requirements.

Please contact with us if you want other covering material which is not listed below.



8192



8193



8194



8191



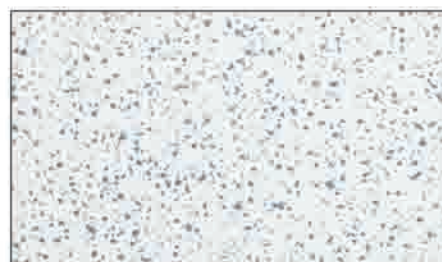
8132



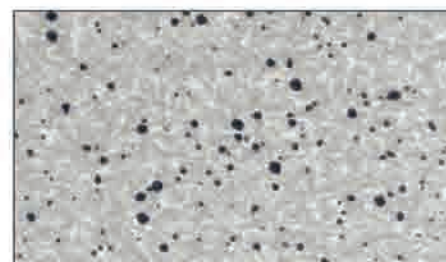
8120



8194-1



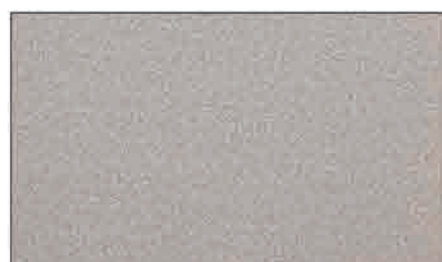
8144



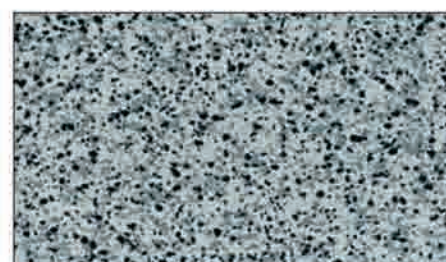
8138



8137

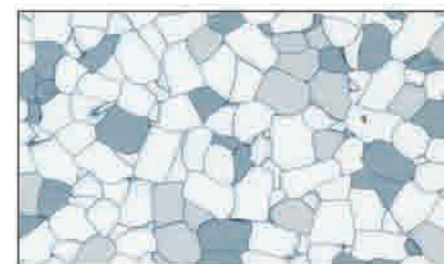


8119

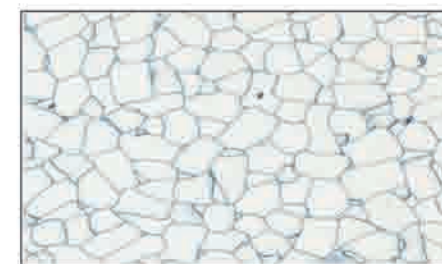


8117

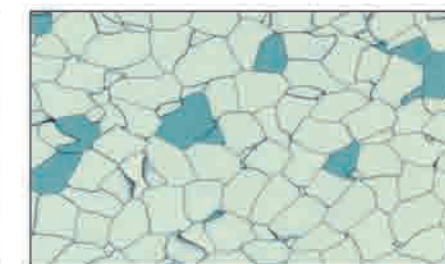
Conductive Vinyl tile



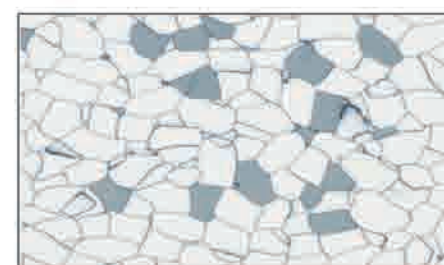
ZT-1101



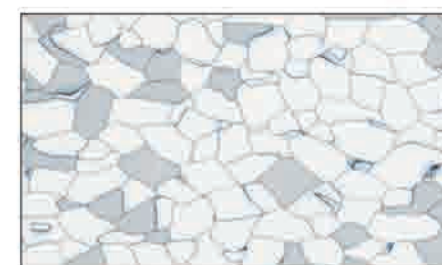
ZT-1103



ZT-02



ZT-04

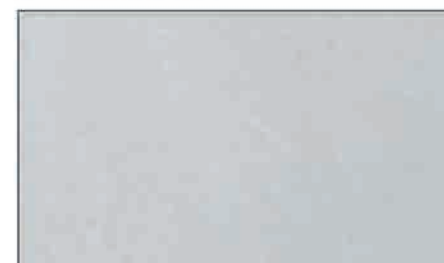


ZT-909

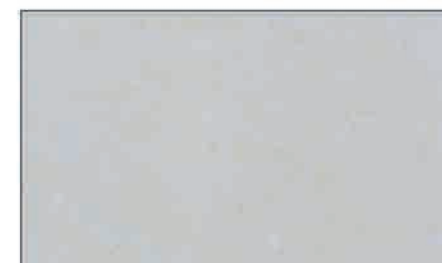


ZT-9022

Ceramic tile



5001



5002

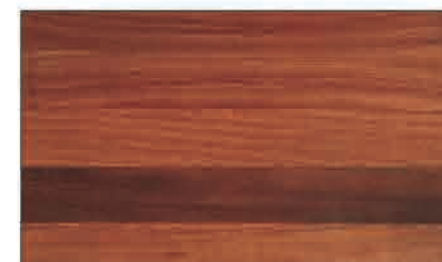


5003

Timber



4801



4802



4803



4804



4805



4806

PROJECT REFERENCE



Bosch Shanghai Research Center
Place: Shanghai
Area: 27000m²
Panel Type: Steel cementitious panel



Shanghai Msd Office Building
Place: Shanghai
Area: 20000m²
Panel Type: Steel cementitious panel



Beijing BOE operations center
Place: Beijing
Area: 30000m²
Panel Type: Steel cementitious panel



Dalian Deep Blue Center Building
Place: Dalian
Area: 40000m²
Panel Type: Calcium sulphate panel



Mobile Data Center in Jilin
Place: Jiling
Area: 10400m²
Panel Type: Calcium sulphate panel



Xingjiang Lvcheng Plaza
Place: Xingjing
Area: 50000m²
Panel Type: Calcium sulphate panel



Shanghai green leaf pharmaceutical
Place: Shanghai
Area: 27000m²
Panel Type: Steel cementitious panel



Suzhou Guoxing Building
Place: Suzhou
Area: 15000m²
Panel Type: Steel cementitious panel



Suzhou Nisheng Building
Place: Suzhou
Area: 38000m²
Panel Type: Steel cementitious panel



Guangzhou Dongfeng Plaza
Place: Guangzhou
Area: 40000m²
Panel Type: Calcium sulphate panel



Nantong International Data Center Industrial Park
Place: Nantong
Area: 14000m²
Panel Type: Calcium sulphate panel



China Telecom (Beijing) Office Building
Place: Beijing
Area: 15000m²
Panel Type: SC panel with HPL finish



Shenyang Friendship Times Square
Place: Shenyang
Area: 20000m²
Panel Type: Steel cementitious panel



Yancheng Financial City
Place: Yancheng
Area: 14570m²
Panel Type: Steel cementitious panel



Tianjin Wantong building
Place: Tianjin
Area: 40000m²
Panel Type: Steel cementitious panel



Nanchang Greenland Center
Place: Nanchang
Area: 20000m²
Panel Type: OA net floor trunking panel



Kunming rail transit
Place: Kunming
Area: 8000m²
Panel Type: SC panel with HPL finish



Chongqing rail transit line 5
Place: Chongqing
Area: 12000m²
Panel Type: SC panel with HPL finish